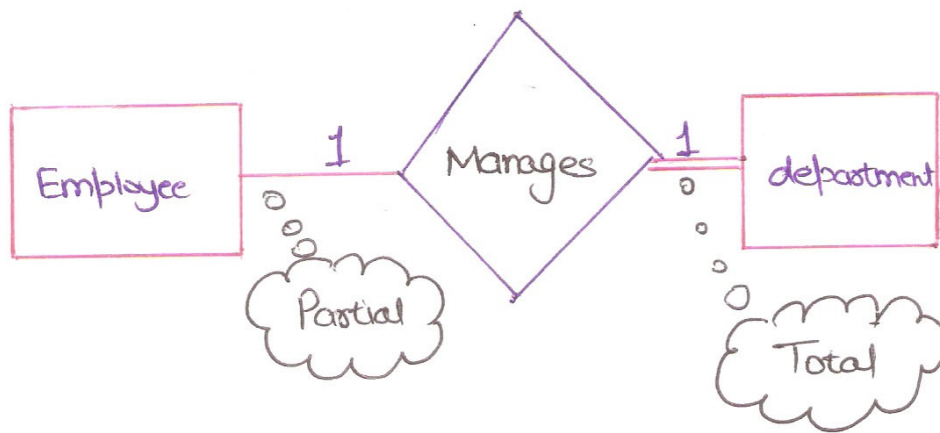


CONVERTING RELATIONSHIP

- The way relationships are represented depends on the Cardinality and the degree of the Relationship.
- Possible Cardinalities are:- 1:1, 1:M, N:M



Case 1: Combination of Participation Types.

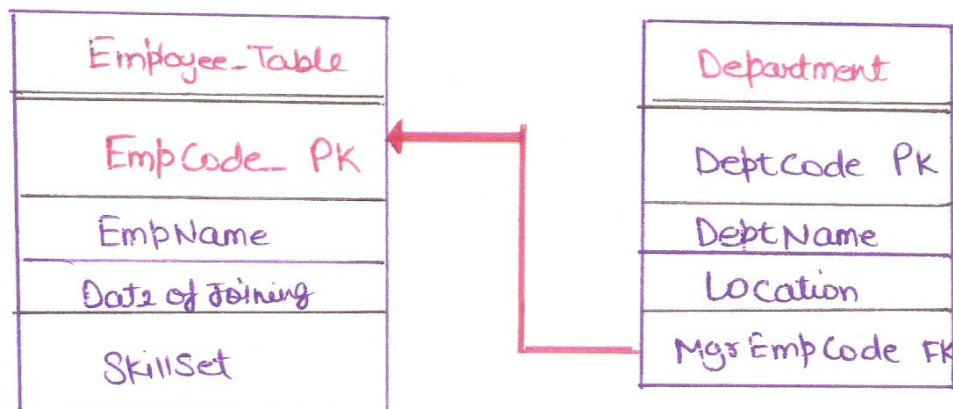
The primary key of the partial participant will become the foreign key of the total participant.

Relationship Schema is

Employee (E#_{PK}, Name,)

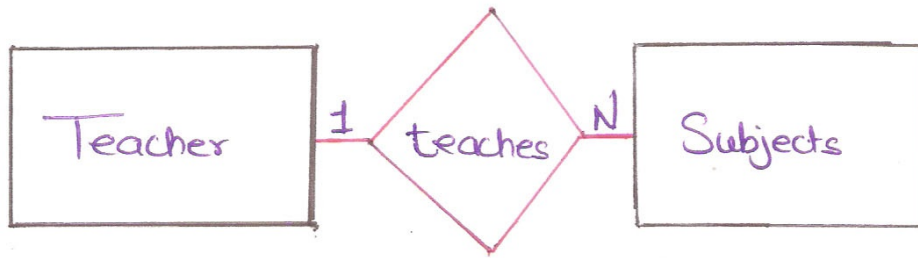
Department (Dept#_{PK}, Name, Mgr#_{FK})

Subscribe to our
YouTube Channel



Converting Relationship of Cardinality 1:N (one to Many)

1:N



In this Primary Key of the Relationship on the '1' side of the Relationship becomes a foreign key in the Relation on the 'N' side.

Teacher (ID, Name, Telephone, ...)

Subject (Code, Name, ... Teachers)

Subscribe to our

YouTube Channel

